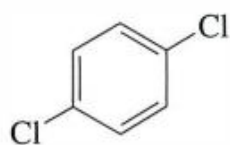


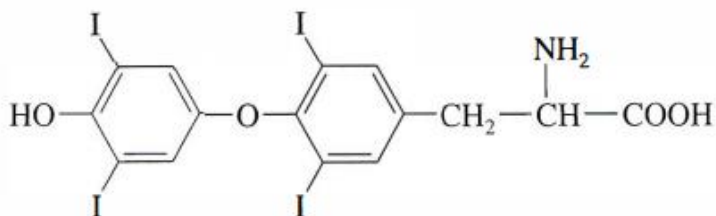
Aryl Halides

An aryl halide has a halogen atom bonded to one of the sp² hybrid carbon atoms of an aromatic ring. The chemistry of aryl halides is different from that of alkylhalides because their bonding and hybridization are different. We consider the reactions of aryl halides step by step. The structures of some representative aryl halides are shown here, with their most common names and uses.

Aryl halides



para-dichlorobenzene
mothballs



thyroxine
thyroid hormone